



NXMK



NXMK + VIPNX

- For special installations
- AISI 316 stainless steel construction
- For highly aggressive environments
- Weatherproof standard IP68



The NXM housing, entirely made of AISI 316 stainless steel, is designed to operate in special environments such as marine, industrial, chemical and where the external agents are highly corrosive.

The NXM housing consists of a 130 mm diameter cylindrical body enclosed by two 12 mm thick circular flanges. The back flange is equipped with two PG13,5 cable glands for the external connections. The NXM can be equipped with an ONXAB flange designed to

create an air barrier in front of the glass to prevent the formation of dust deposits. With the NXFIGRU filter group is recommended, which purifies the air drawn by a compressor.

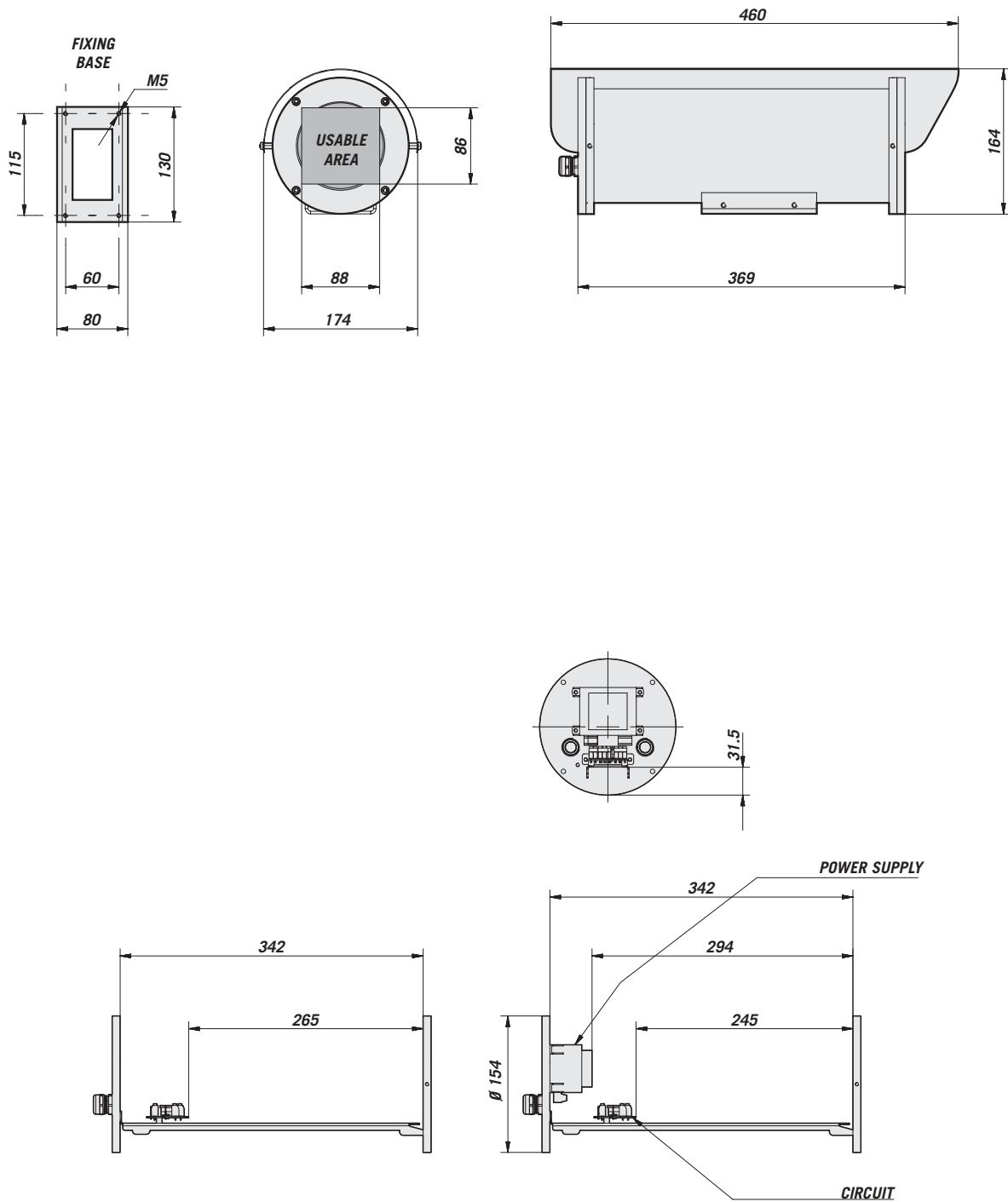
A wide range of accessories is available, including heater, camera power supply, NXWBS stainless steel special bracket and possibility of mounting the VIPNX wiper and washer.

MODELS

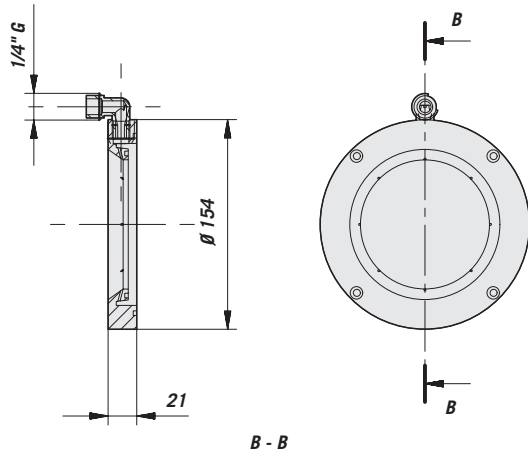
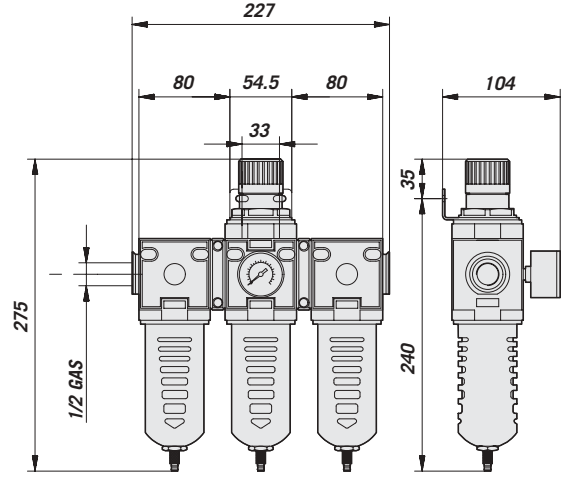
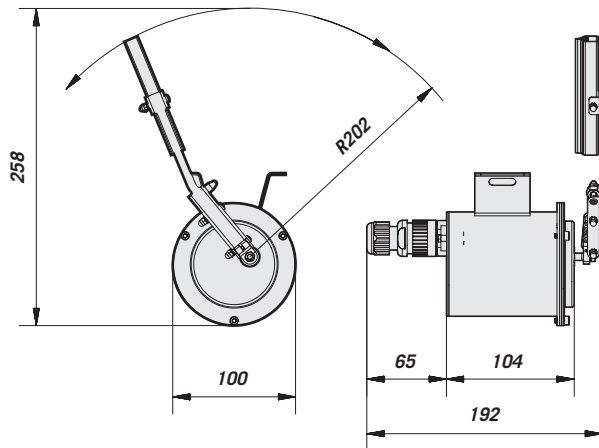
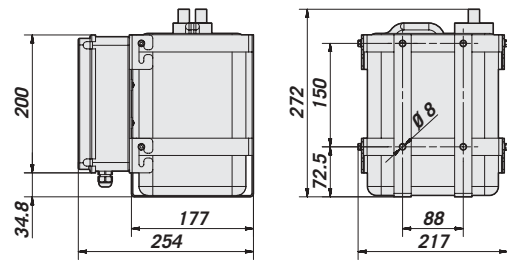
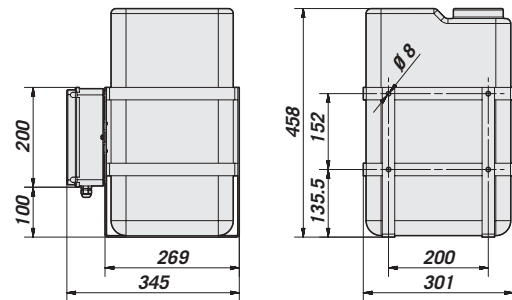
	Sunshield	Heater 110VAC-230VAC	Heater 12VDC-24VAC
NXMOD			
NXM1K	•	•	
NXM2K	•		•



NXM



The values are in millimeters.

ONXAB1

NXFIGRU

VIPNX

VIP5WAS

VIP25WAS


The values are in millimeters.

**NXM****FOR INSTALLATION IN AGGRESSIVE ENVIRONMENTS****TECHNICAL DATA****GENERAL**

Made of stainless steel (Austenitic alloy stainless steel, corrosion and heat-resistant according to the following standards):

- UNI 6900-71: X 2 Cr Ni Mo 17 12
- AISI: 316L
- DIN 17006: X 2 Cr Ni Mo 18 10
- N° WERKSTOFF: 1.4404
- AFNOR: Z2 CND 17-12
- BSI: 316 S 12

The screws utilised are in austenitic alloy stainless steel, corrosion and heat-resistant according to the following standards:

- UNI 6900: X 5 Cr Ni Mo 1712
- AISI: 316
- ISO quality: A4
- Resistance class ISO: 80
- 12 mm (0.47 in) thick front and back flange
- O-ring gaskets

UNI: Ente Nazionale Italiano di Unificazione, AISI: American Iron and Standard Institute, DIN: Deutsche Industrie Normen, AFNOR: Association Française de Normalisation, BSI: British Standard Institution, ISO: International Organization for Standardization.

MECHANICAL

- 2 PG13,5 cable glands in nickel-plated brass for external connections
- External dimensions: Ø 125 mm (4.9 in) length 350 mm (13.77 in)
- Internal usable dimensions BxH: 88x86 mm (3.46x3.38 in)
- Window glass 4 mm (0.15 in) thick, Ø 97 mm (3.8 in)

Usable length mm (in):

- Internal usable length: 343 mm (13.5 in)
- Internal usable length with connection board: 265 mm (10.4 in)
- Internal usable length with connection board and power supply: 245 mm (9.6 in)

Wiper VIPNX:

- Wiper blade and enclosure made of AISI 316 stainless steel
- Dimensions (DiameterxL): 100x169 mm (3.9x6.6 in) not comprehensive of blade
- Weight: 1,5 kg (3.3 lb)
- Connector 3+1 pins

Washer pump:

- Dimensions BxHxL: VIP5WAS 217x272x254 mm (8.5x10.7x10 in)
- Dimensions BxHxL: VIP25WAS 301x458x343 mm (11.8x18x13.5 in)
- Reservoir capacity 5 or 25 l (1.3 or 6.6 gal). Delivery head max 5 m (16 ft).

ELECTRICAL

Heater, Ton 15°C+/-3°C (59°F) Toff 22°C +/-3°C (71°F):

- ONXMH1 12VDC-24VAC consumption 20W
- ONXMH2 110VAC-230VAC consumption 40W

Camera power supply:

- ONXPS1 Input 230VAC, 50Hz, output 12VDC, 400mA max
- ONXPS2 Input 230VAC, 50Hz, output 24VAC, 400mA max

Wiper:

- VIPNX1 Input 230VAC, 50/60Hz, consumption 7W
- VIPNX2 Input 24VAC, 50/60Hz, consumption 7W

Washer pump:

- VIP5WAS01 Input 230VAC, consumption 12W
- VIP5WAS02 Input 24VAC, consumption 12W
- VIP25WAS01 Input 230VAC, consumption 12W
- VIP25WAS02 Input 24VAC, consumption 12W

ACCESSORIES

- ONXMAS6 Sunshield
- ONXMH1 Heater 110VAC/230VAC
- ONXMH2 Heater 12VDC/24VAC
- ONXPS1 Camera power supply 230VAC/12VDC
- ONXPS2 Camera power supply 230VAC/24VAC
- VIPNX1 New AISI 316 Stainless Steel wiper kit 230V 50/60Hz
- VIPNX2 New AISI 316 Stainless Steel wiper kit 24V 50/60Hz
- VIP5WAS01 Tank 5 liters + 230VAC washer pump
- VIP5WAS02 Tank 5 liters + 24VAC washer pump
- VIP25WAS01 Tank 25 liters + 230VAC washer pump
- VIP25WAS02 Tank 25 liters + 24VAC washer pump
- ONXAB1 Air barrier for NXM with tempered glass included
- NXFIGRU Air filtering

RELATED PRODUCTS**Brackets:**

- NXWBS Heavy duty housing stainless steel wall mount

P&T:

- NXPTH200 Series Heavy duty AISI 316 stainless steel P&T heads, 50/60Hz with preset

ENVIRONMENT

- Indoor/outdoor
- Submersible up to -50 m (-164 ft) (5 Bar pressure)
- Operating temperature: -20°C +50°C (-4 +122° F)

COMPLIANCE TO**NXM**

- CE according to EN 60950, EN 50081-1 and EN50130-4
- IP68 according to EN60529 IP66/IPx8 (5 Bar for 48 hours)

VIPNX

- CE according to EN 60950, EN 50081-1 and EN50130-4
- IP66

SPARE PARTS LIST

- ONXMMAN Maintenance kit NXM housing
- OSPANX Wiper blade for VIPNX



Unit Weight (kg / lb):
NXMK: 6,6 / 14,5

Package Weight (kg / lb):
NXMK: 7,3 / 16

Package Dimensions (cm / in):
NXMK: 24,5x24,5x62 / 9,6x9,6x24,4

Master Carton (units):
NXMK: 1