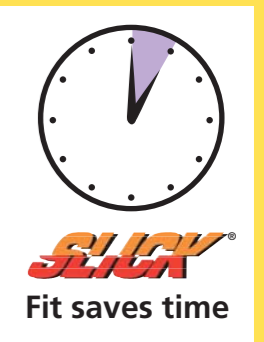


Hard Wired Residential, Interconnectable Ion & Optical Smoke Alarms, Heat & Carbon Monoxide (CO) Alarms



Feature packed Smoke and Heat Alarms

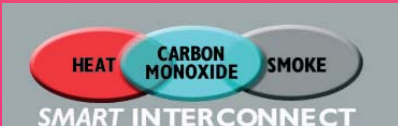


Features:

- 10 year guarantees on rechargeable models, 6 year guarantees on others
- Alarm slides into base plate needing no cable harness • Locks by default
- 4 sealed in Lithium rechargeable cells or loose alkaline
- Twin, easy to see and use test/hush buttons for ease of use
- Cable entry via rear or side
- 24 other Kidde Fyrnetics AC Smoke/Heat alarms; if CO alarms also connected, maximum number is 18

Smart Interconnect

All our mains powered (AC) Smoke and Heat Alarms are interconnectable to our Hard Wired CO Alarms, a unique feature from Kidde Fyrnetics.



Kidde is the World's Largest Manufacturer of Fire Suppression and Detection



A range of hard wired Smoke and Heat alarms with rechargeable back-up options and a fast fixing mechanism



RECHARGEABLE LITHIUM BACK UP 230V AC/DC (Long Life)	Optical 2SF23/9HIR	Ionisation 1SF23/9HIR	Heat 3SF23/9HIR
LOOSE ALKALINE BACK UP 230V AC/DC (Alkaline)	 2SF23/9HI	 1SF23/9HI	 3SF23/9HI



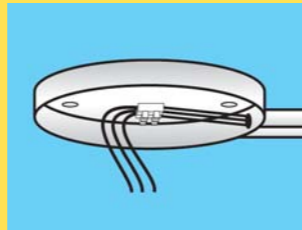
Making installation even simpler



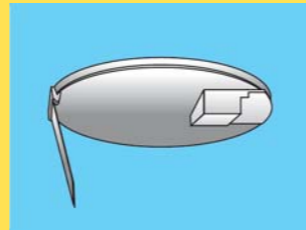
Bring cabling through ceiling void



Or via side entry



Or via Surface Pattress



Affix base plate to ceiling or Surface Pattress



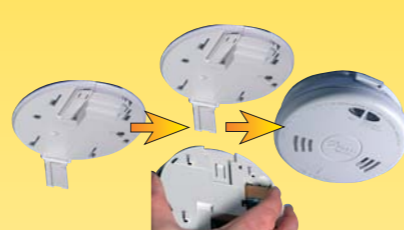
Remove safety cover, wire into alarm



Replace on hinge, ensuring if loose battery type that it's correctly fitted



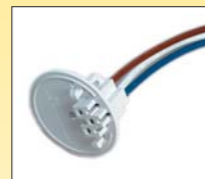
Slide home onto base and power up



3 simple steps - that's it!

Cable Harness Range

Alongside our **SLICK**® fast fit range we also have our earlier range that uses the older cable harness connection.



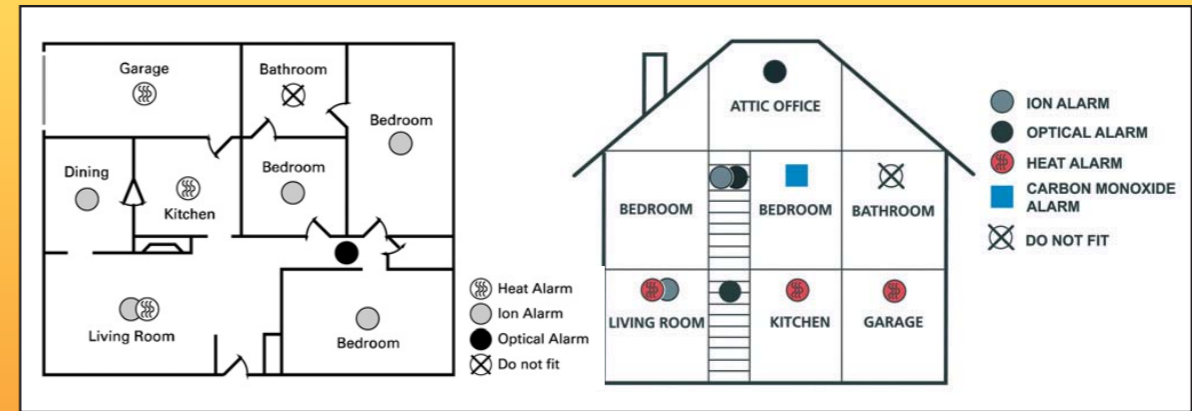
There are 8 models in this range as detailed on the back of this leaflet. They comprise **Optical, Ionisation and Heat Alarms** all interconnectable up to 24 alarms or 18 if CO connected to: **AC with sealed in Lithium Back Up: 10 Year Guarantee: Ion, Optical and Heat. AC with Duracell Alkaline Back Up: 6 Year Guarantee: Ion, Optical and Heat.** See grid on the reverse for more details.

10 year guaranteed models are available with Sealed In Lithium battery back up. Additionally we have 4 interconnectable battery (DC) Smoke Alarms, again with Sealed In Lithium models.



Siting

In a minimum installation, fit one Optical downstairs, one Heat alarm in the kitchen and one Ion upstairs. Use diagram below for more specific advice together with Alarm Installer Manual; this is available online. For maximum protection, you should protect every bedroom with alarms, most fires start at night.



SLICK® fast-fit Hard-wired Smoke & Heat

Model no	Alarm Type	AC Power	Alkaline back-up	Rechargeable back-up	Unit guarantee	Back-up guarantee	Hush button	Interconnect x12	Interconnect x24
1SF23/9HIR	Ionisation	✓	-	✓	10 years	10 years	✓	-	✓
1SF23/9HI	Ionisation	✓	✓	-	6 years	-	✓	-	✓
2SF23/9HIR	Optical	✓	-	✓	10 years	10 years	✓	-	✓
2SF23/9HI	Optical	✓	✓	-	6 years	-	✓	-	✓
3SF23/9HIR	Heat	✓	-	✓	10 years	10 years	✓	-	✓
3SF23/9HI	Heat	✓	✓	-	6 years	-	✓	-	✓

Cabled range Hard-wired Smoke & Heat Alarms

Model no	Alarm Type	AC Power	Alkaline back-up	Sealed Lithium back-up	Unit guarantee	Back-up guarantee	Hush button	Interconnect x12	Interconnect x24
123/9HILL	Ionisation	✓	-	✓	10 years	10 years	✓	-	✓
123/9HI	Ionisation	✓	✓	-	6 years	-	✓	-	✓
123I	Ionisation	✓	-	-	6 years	-	-	-	✓
223/9HILL	Optical	✓	-	✓	10 years	10 years	✓	-	✓
223/9HI	Optical	✓	✓	-	6 years	-	✓	-	✓
223I	Optical	✓	-	-	6 years	-	-	-	✓
323/9HILL	Heat	✓	-	✓	10 years	10 years	✓	-	✓
323/9HIL	Heat	✓	✓	-	6 years	-	✓	-	✓

Interconnectable DC Powered Smoke Alarms

Model no	Alarm Type	AC Power	Alkaline back-up	Sealed Lithium back-up	Unit guarantee	Back-up guarantee	Hush button	Interconnect x12	Interconnect x24
19HILL	Ionisation	DC	-	✓	10 years	10 years	✓	✓	-
19HI	Ionisation	DC	✓	-	5 years	-	✓	✓	-
29HILL	Optical	DC	-	✓	5 years	5 years	✓	✓	-
29I	Optical	DC	✓	-	5 years	-	-	✓	-

SEALLED IN BACK UP

	Diameter	Depth
Smoke/CO Alarm	135.00mm	42.00
Heat Alarm	135.00mm	55.00

Surface Pattresses	Diameter	Depth
SMK23 / SMK23	144.20	20.50



SMK23: A surface pattress for retrofit projects typically. Entry via surface cabling/mini trunking through side knockouts or via rear.
 SMK23R: As above but with built-in switchable relay (will not function without live mains supply). For operating remote devices such as: door closers, warning lights or signalling to Warden control systems.
 For Smoke & Heat alarms only.

Hard Wired Carbon Monoxide Alarms for homes

Global Expertise

Kidde Fyrnetics manufactures 24 million CO, smoke and heat alarms every year and has unrivalled expertise and commitment to ongoing research and development – with the resources to match as part of the \$43 billion United Technologies (UTC) group. Our alarms are all Kitemarked and made in our ISO 9001 and 14001 certified factories.

New Feature-packed hard-Wired CO alarms

Features of both models:

Our new range of hard-wired CO alarms consists of two models: 423/9HIR and the digital alarm 423D/9HIR. Both share an extensive range of features including:

- Sealed-in, rechargeable lithium cells for back-up preventing tenant access

- Sampling air every 15 seconds – safer than others sampling every 60 seconds

- Unique Smart Interconnect allowing Kidde Fyrnetics hard-wired smoke, heat or CO alarms to be linked on one wiring network

- Neat circular design can be ceiling or wall mounted

- Product life of 7 years from initial power up and full guarantee for 6 years



Extra features of the 423D/9HIR model:

- Digital display showing the parts per million (ppm) when CO is detected, calculating the ppm and length of exposure time

- Memory recall feature enables users to verify if there has been a CO incident in their absence which had ceased before their return

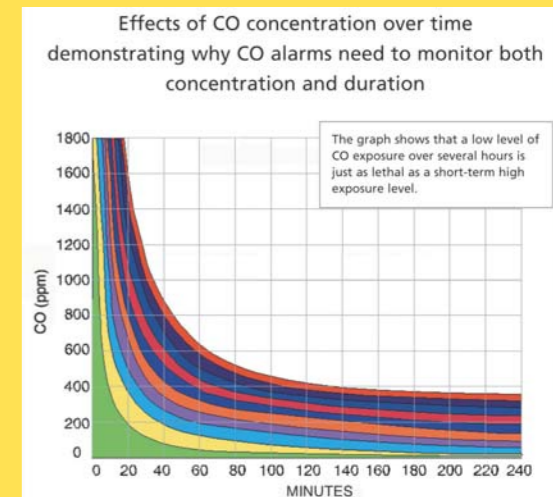
- Display indicates "Fire" if triggered by interconnected smoke/heat alarm, or "CO" if triggered by interconnected CO alarm

CO and human health

According to the Health and Safety Executive, carbon monoxide (CO) poisoning causes an estimated 50 deaths and 200 serious injuries annually in Britain. Other organisations have recorded higher fatality and injury levels and all these figures reflect just what we know about: CO poisoning is certainly underdiagnosed by doctors and often not recognised by coroners, as it simulates other conditions.

CO is odourless and colourless. It bonds with haemoglobin in the blood to gradually replace essential oxygen, preventing the uptake of oxygen into the blood, resulting in headaches, nausea, unconsciousness – and finally death.

While exposure to high concentrations leads to collapse, long-term exposure to lower concentrations can result in symptoms similar to flu or food poisoning. As the chart shows, lower level exposure over a longer period can prove fatal just as higher level, short-term doses. Surviving victims of CO poisoning may well be left permanently unwell and disabled through neurological damage.



Key

50% COhb	Death	25%	Nausea+headache
45%	Coma/brain damage	20%	headache
40%	collapse	15%	mild headache
35%	vomiting	10%	none
30%	drowsiness	5%	none

Smart Interconnect

Domestic alarms fulfil two essential functions: sensing carbon monoxide or a fire incident, then alerting occupants to danger with a loud sander and other indicators. The unique Smart Interconnect feature enables a number of Kidde Fyrnetics hard-wired CO, smoke or heat alarms to be interconnected within a home.



Hard-wired Carbon Monoxide Alarms

Model no	Display window	AC Power	Memory	Wall or ceiling mounted	Rechargeable back-up	Unit/Back-up guarantee	Dimensions	Hush button	Interconnectable to Kidde hard-wired smoke & heat alarms
423D/9HIR	✓	✓	✓	✓	✓	6 years	146 x 46	✓	✓
423/9HIR	-	✓	-	✓	✓	6 years	146 x 46	✓	✓

▶ Sealed in back up

Battery Powered Carbon Monoxide Alarms

Model no	Display window	Power	Memory	Wall or ceiling mounted	Unit guarantee	Dimensions	Hush button	Interconnectable to Kidde hard-wired smoke & heat alarms
9C05UK	-	DC	-	✓	5 years	146 x 38	✓	-
900-0146UK	✓	DC	✓	✓	5 years	146 x 38	✓	-

Availability and Support

Available through selected electrical wholesalers nationwide. Supported by a national team providing local support. Installation/Owner manuals on our website.

A4/EW/IN/706

Kidde Safety Europe, Mathisen Way,
Colnbrook, SL3 0HB, UK
Telephone +44 (0)1753 685148
Fax +44 (0)1753 685096
Email kiddefyr@ukgateway.net
www.kiddefyrnetics.co.uk

